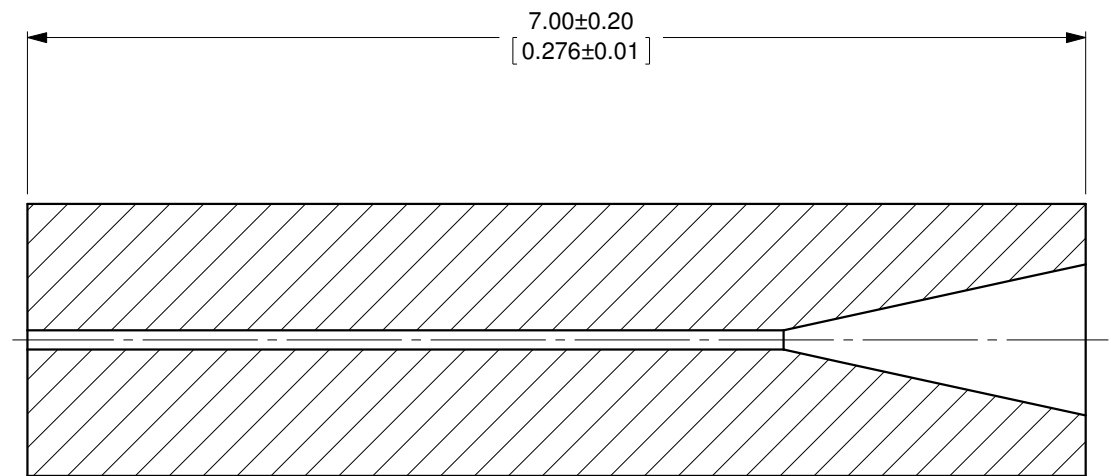
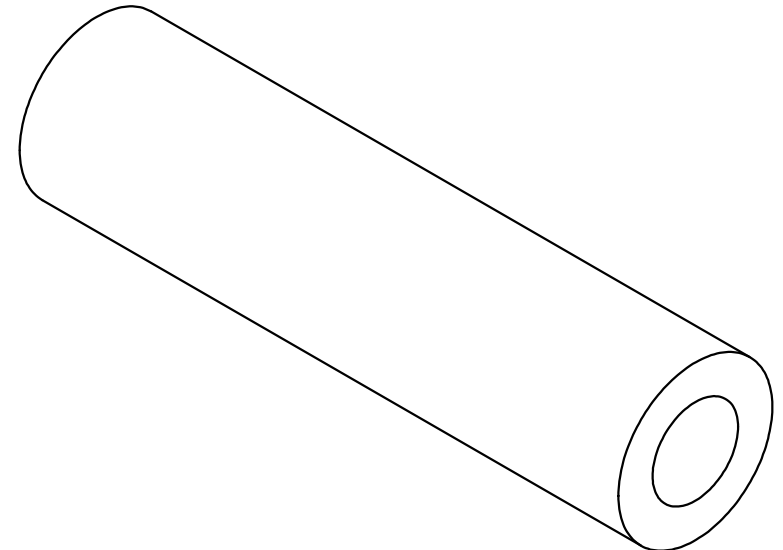
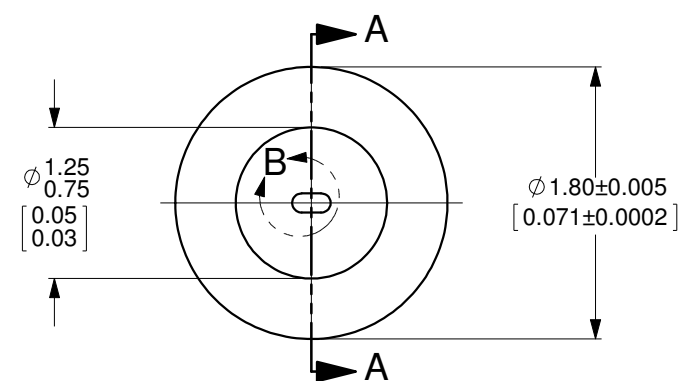


DETAIL B  
SCALE 40 : 1



SECTION A-A



**MATERIAL: 33 EXPANSION GLASS**  
OZ Optics reserves the right to change any specification without prior notice.

A		N/A		ORIGINAL ISSUE		C.M.	31-OCT-2019
REV.	ECR REF#	DESCRIPTION	ENG. BY	DATE			
<b>ALL DIMENSIONS ARE IN MILLIMETERS</b>							
DRAWN BY:	DATE:	UNLESS NOTED OTHERWISE, DIMENSIONS ARE IN MILLIMETERS, INCHES ARE IN SQUARE BRACKETS, AND TOLERANCES APPLY AS SHOWN BELOW.				PART BARCODE #	
P. Summers	10/31/2019					21589	
CHECKED BY:	DATE:	INCHES				219 WESTBROOK ROAD OTTAWA, ONTARIO CANADA K0A 1L0	
		BASIC DIMENSION	DECIMAL PLACES	www.ozoptics.com			
M/S CHECKED BY:	DATE:	BELOW 4	.XX .XXX				
		OVER 4	+.01 +.005				
APVD BY:	DATE:	MILLIMETERS				DESC.	
		BASIC DIMENSION	.X .XX	1.8mm +/-0.005mm OD GLASS FERRULE			
PROJECTION:		BELOW 101.6	±.25 ±.10	0.127X0.252mm OVAL BORE, 7.0+/-0.2mm LONG			
		OVER 101.6	±.50 ±.20	PART NO. FER-1.8-D127-GL -7			
CONFIDENTIAL THIS PRINT IS THE EXCLUSIVE PROPERTY OF OZ OPTICS AND MUST BE RETURNED UPON REQUEST. UNAUTHORIZED USE, MANUFACTURE OR REPRODUCTION IN WHOLE OR IN PART IS PROHIBITED.		ANGULAR DIMENSIONS		SCALE: 20:1		REV A	
		BASIC DIMENSION	X .X.X	SIZE: B	DWG.# 4000-0366	SHEET 1 OF 1	
		ALL ANGLES	±2.5° ±0.5°				
		SURFACE FINISH	MILLED PROFILED				
			125u 63u				