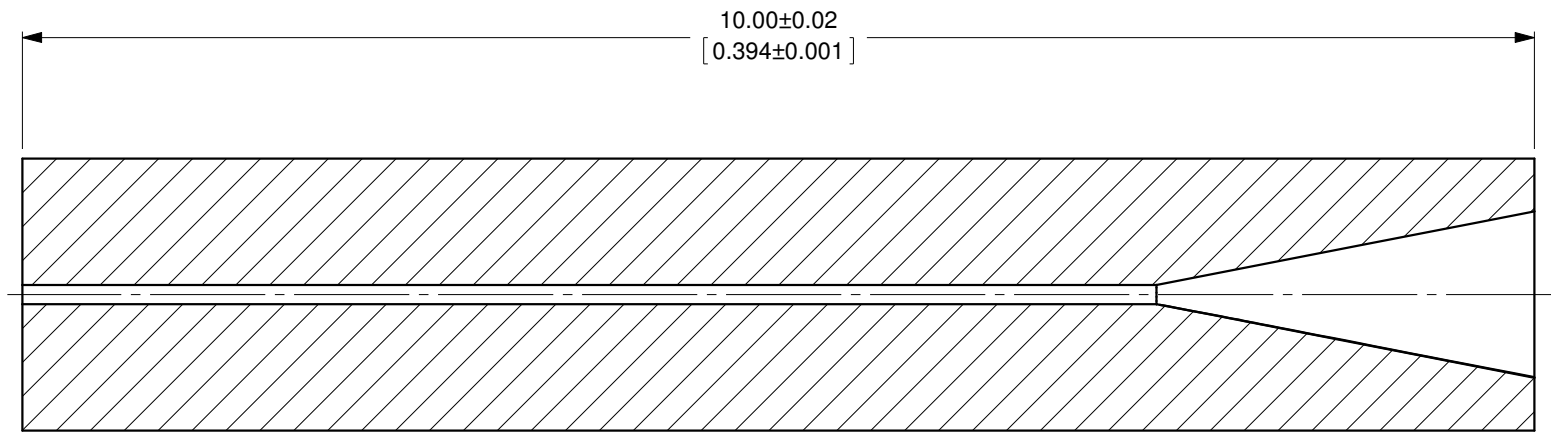
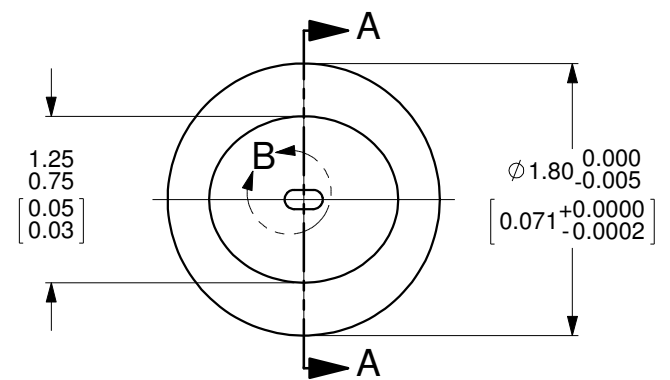




DETAIL B
SCALE 40 : 1



SECTION A-A



MATERIAL: 33 EXPANSION GLASS
OZ Optics reserves the right to change any specification without prior notice.

A		N/A		ORIGINAL ISSUE		C.M.		31-OCT-2019	
REV.	ECR REF#	DESCRIPTION	ENG. BY	DATE					
ALL DIMENSIONS ARE IN MILLIMETERS UNLESS NOTED OTHERWISE, DIMENSIONS ARE IN MILLIMETERS, INCHES ARE IN SQUARE BRACKETS, AND TOLERANCES APPLY AS SHOWN BELOW.					 219 WESTBROOK ROAD OTTAWA, ONTARIO CANADA K0A 1L0 PART BARCODE #: 3617				
DRAWN BY: P. Summers		DATE: 10/31/2019		DESC: GLASS FERRULE 1.8mm OD WITH OVAL ID OF 0.127mm 0.252 mm BORE, 10mm LONG		PART NO. FER-1.8-D127-GL		REV A	
CHECKED BY:		DATE:		M/S CHECKED BY:		DATE:		APVD BY:	
M/S CHECKED BY:		DATE:		APVD BY:		DATE:		PROJECTION: 	
BASIC DIMENSION		DECIMAL PLACES		BASIC DIMENSION		DECIMAL PLACES		ANGULAR DIMENSIONS	
BELOW 4		.XX .XXX		BELOW 101.6		.X .XX		BASIC DIMENSION	
OVER 4		+.01 ±.005		OVER 101.6		±.25 ±.10		ALL ANGLES	
		+.02 ±.01				±.50 ±.20		SURFACE FINISH	
								MILLED PROFILED	
								125u 63u	
								SIZE: B	
								DWG.# 4000-0365	
								SHEET 1 OF 1	
								SCALE: 20:1	

CONFIDENTIAL
THIS PRINT IS THE EXCLUSIVE PROPERTY OF OZ OPTICS AND MUST BE RETURNED UPON REQUEST. UNAUTHORIZED USE, MANUFACTURE OR REPRODUCTION IN WHOLE OR IN PART IS PROHIBITED.