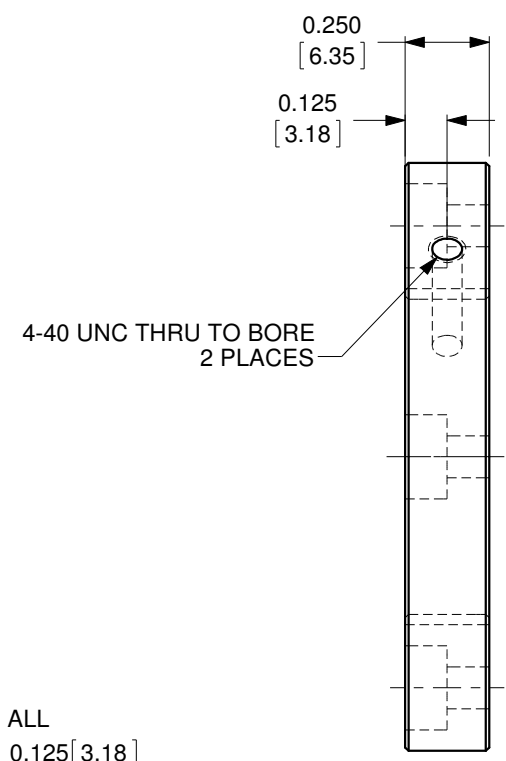
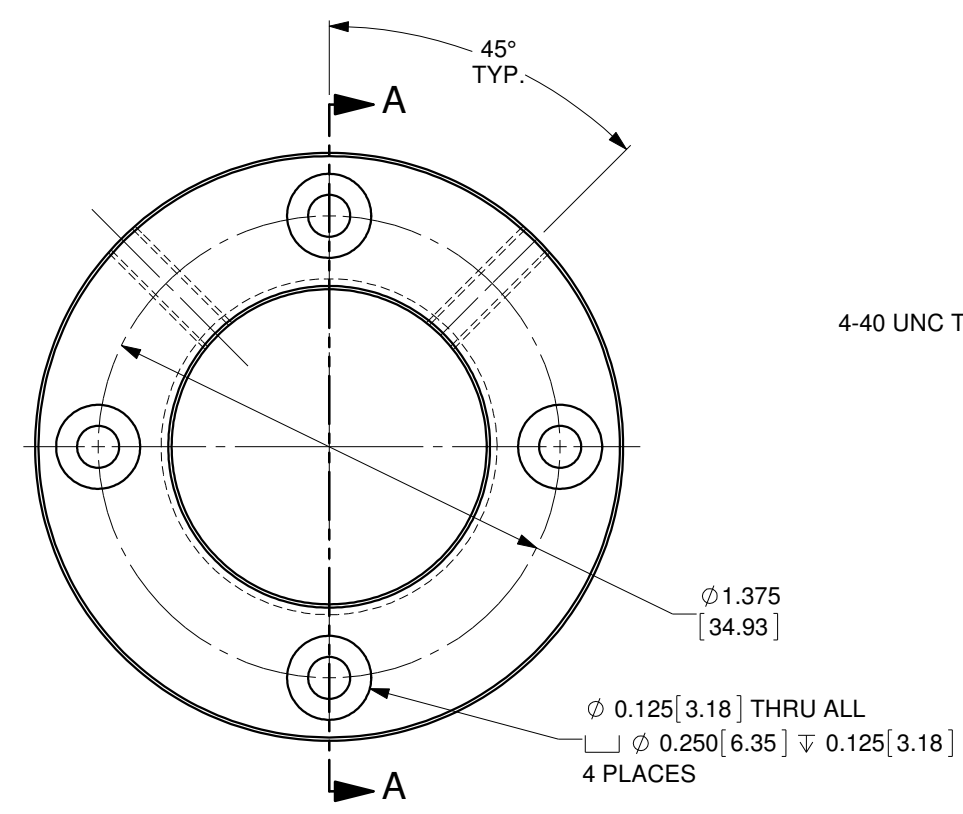


SECTION A-A



NOTE: THIS ADAPTER INCLUDES BC# 817 (NOT SHOWN)

MATERIAL: 6061-T6 ALUMINUM, BLACK ANODIZED
OZ Optics reserves the right to change any specification without prior notice.

ALL DIMENSIONS ARE IN INCHES		A	N/A	ORIGINAL ISSUE	C.M.	21-OCT-2019
REV.	ECR REF#	REV.	DESCRIPTION	ENG. BY	DATE	
DRAWN BY: P. Summers		DATE: 12/6/2019		UNLESS NOTED OTHERWISE, DIMENSIONS ARE IN INCHES. MILLIMETERS ARE IN SQUARE BRACKETS, AND TOLERANCES APPLY AS SHOWN BELOW.		
CHECKED BY:		DATE:		INCHES		
M/S CHECKED BY:		DATE:		BASIC DIMENSION .XX .XXX		
APVD BY:		DATE:		BELOW 4 ±.01 ±.005		
PROJECTION:		DATE:		OVER 4 ±.02 ±.01		
CONFIDENTIAL		DATE:		MILLIMETERS		
THIS PRINT IS THE EXCLUSIVE PROPERTY OF OZ OPTICS AND MUST BE RETURNED UPON REQUEST. UNAUTHORIZED USE, MANUFACTURE OR REPRODUCTION IN WHOLE OR IN PART IS PROHIBITED.		DATE:		BASIC DIMENSION .X .XX		
		DATE:		BELOW 101.6 ±.25 ±.10		
		DATE:		OVER 101.6 ±.50 ±.20		
		DATE:		ANGULAR DIMENSIONS		
		DATE:		BASIC DIMENSION X .X.X		
		DATE:		ALL ANGLES ±2.5° ±0.5°		
		DATE:		SURFACE FINISH		
		DATE:		MILLED PROFILED		
		DATE:		125u 63u		
OZ Optics Limited 219 WESTBROOK ROAD OTTAWA, ONTARIO CANADA K0A 1L0 www.ozoptics.com				PART NO. 19791 LASER HEAD ADAPTER #23 1.75" DISK ADAPTER WITH 4 HOLES ON A 1.375" DIA BOLT CIRCLE AND 1-32 FEMALE THREAD LPSC-34		
SCALE: 1.75:1 SHEET 1 OF 1 DWG.# 4000-0341 SIZE: B				REV A		