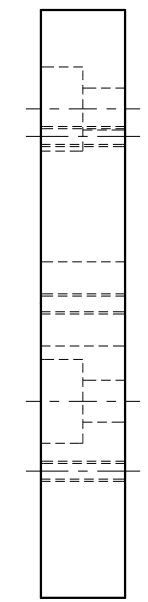
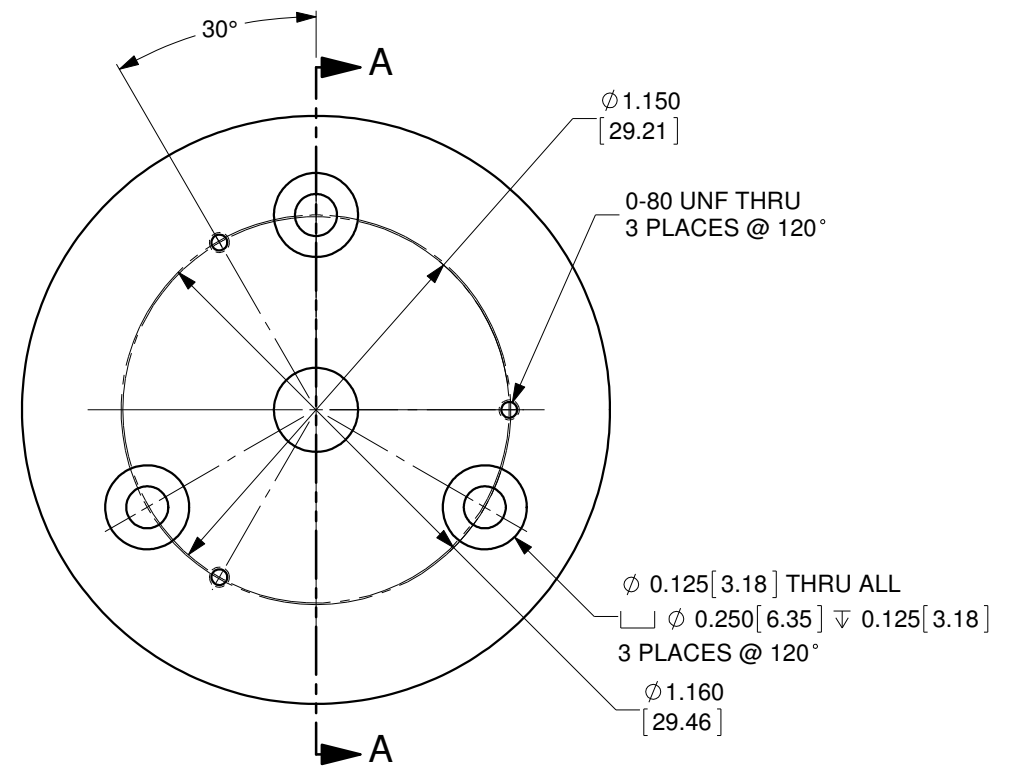


SECTION A-A



MATERIAL: 6061-T6 ALUMINUM, BLACK ANODIZED
OZ Optics reserves the right to change any specification without prior notice.

ALL DIMENSIONS ARE IN INCHES		A	N/A	ORIGINAL ISSUE	C.M.	18-OCT-2019	
DRAWN BY:	DATE:	REV.	ECR REF#	DESCRIPTION	ENG. BY	DATE	
P. Summers	10/18/2019						
CHECKED BY:	DATE:	UNLESS NOTED OTHERWISE, DIMENSIONS ARE IN INCHES. MILLIMETERS ARE IN SQUARE BRACKETS, AND TOLERANCES APPLY AS SHOWN BELOW. INCHES BASIC DIMENSION DECIMAL PLACES BELOW 4 .XX .XXX OVER 4 +.01 +.005 +.02 +.01 MILLIMETERS BASIC DIMENSION DECIMAL PLACES BELOW 101.6 .X .XX OVER 101.6 ±.25 ±.10 ±.50 ±.20 ANGULAR DIMENSIONS BASIC DIMENSION X X.X ALL ANGLES ±2.5° ±0.5°				219 WESTBROOK ROAD OTTAWA, ONTARIO CANADA K0A 1L0 PART BARCODE # 15351	
M/S CHECKED BY:	DATE:						
APVD BY:	DATE:						
PROJECTION:							
CONFIDENTIAL THIS PRINT IS THE EXCLUSIVE PROPERTY OF OZ OPTICS AND MUST BE RETURNED UPON REQUEST. UNAUTHORIZED USE, MANUFACTURE OR REPRODUCTION IN WHOLE OR IN PART IS PROHIBITED.		SURFACE FINISH MILLED PROFILED 125u 63u		DESC. LASER HEAD ADAPTER #21 1.75" OD DISK ADAPTER WITH 3 HOLES ON A 1.15" DIA BOLT CIRCLE		PART NO. LPSC-32	REV A
		SIZE:	DWG.#	SHEET 1 OF 1	SCALE: 1.75:1		
		B	4000-0339				

