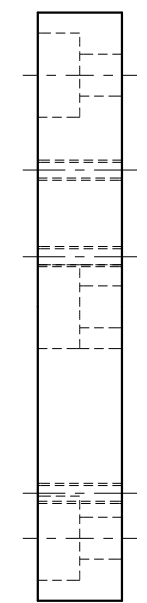
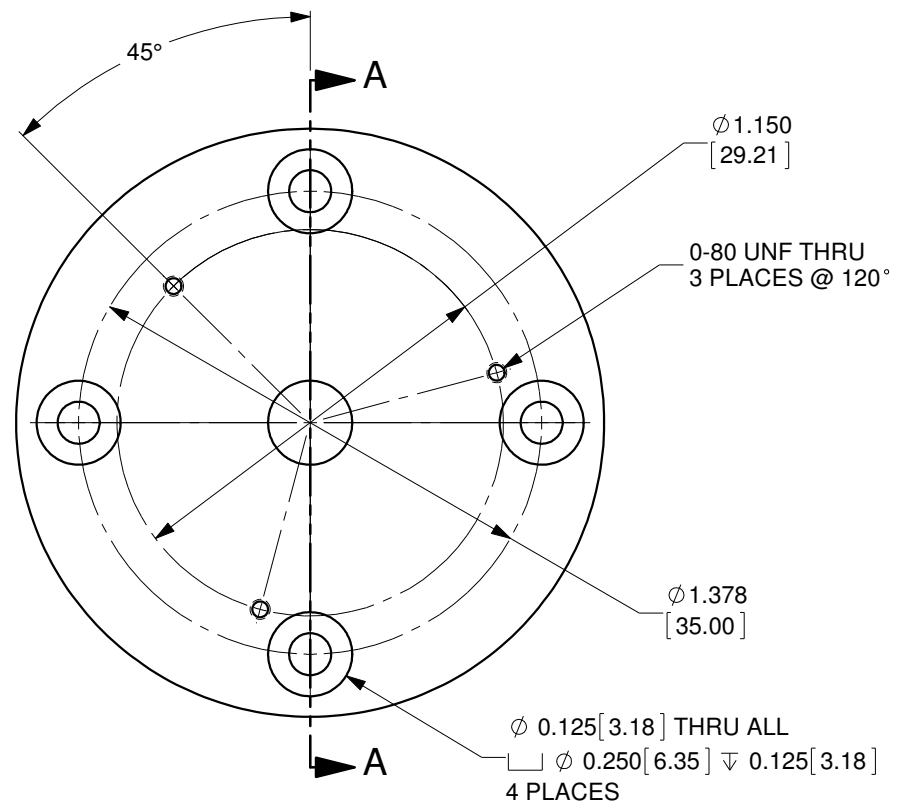


SECTION A-A



MATERIAL: 6061-T6 ALUMINUM, BLACK ANODIZED
OZ Optics reserves the right to change any specification without prior notice.

ALL DIMENSIONS ARE IN INCHES		A	N/A	ORIGINAL ISSUE	C.M.	18-OCT-2019
REV.	ECR REF#	REV.	ECR REF#	DESCRIPTION	ENG. BY	DATE
DRAWN BY: P. Summers		DATE: 10/18/2019		UNLESS NOTED OTHERWISE, DIMENSIONS ARE IN INCHES, MILLIMETERS ARE IN SQUARE BRACKETS, AND TOLERANCES APPLY AS SHOWN BELOW. INCHES BASIC DIMENSION: .XX .XXX BELOW 4: ±.01 ±.005 OVER 4: ±.02 ±.01 MILLIMETERS BASIC DIMENSION: .X .XX BELOW 101.6: ±.25 ±.10 OVER 101.6: ±.50 ±.20 ANGULAR DIMENSIONS BASIC DIMENSION: X .X.X ALL ANGLES: ±2.5° ±0.5°	PART BARCODE #	
CHECKED BY:		DATE:			219 WESTBROOK ROAD OTTAWA, ONTARIO CANADA K0A 1L0	
M/S CHECKED BY:		DATE:			837	
APVD BY:		DATE:			www.ozoptics.com	
PROJECTION:				DESC. LASER HEAD ADAPTER #20		PART NO. LPSC-31
CONFIDENTIAL THIS PRINT IS THE EXCLUSIVE PROPERTY OF OZ OPTICS AND MUST BE RETURNED UPON REQUEST. UNAUTHORIZED USE, MANUFACTURE OR REPRODUCTION IN WHOLE OR IN PART IS PROHIBITED.		SURFACE FINISH: MILLED 125u, PROFILED 63u		1.75" OD DISK ADAPTER WITH 4 HOLES ON A 35mm DIA BOLT CIRCLE		
		SIZE: B		DWG.# 4000-0338		SCALE: 1.75:1
		SHEET 1 OF 1		REV A		