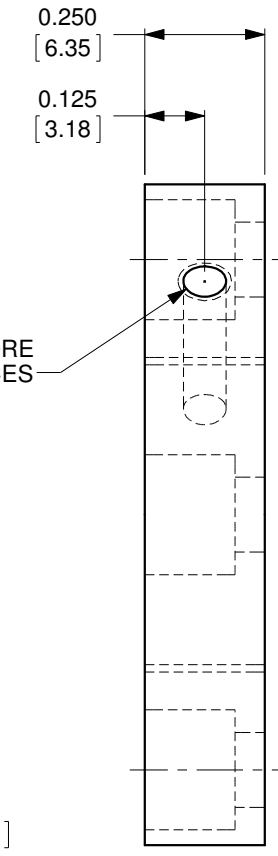
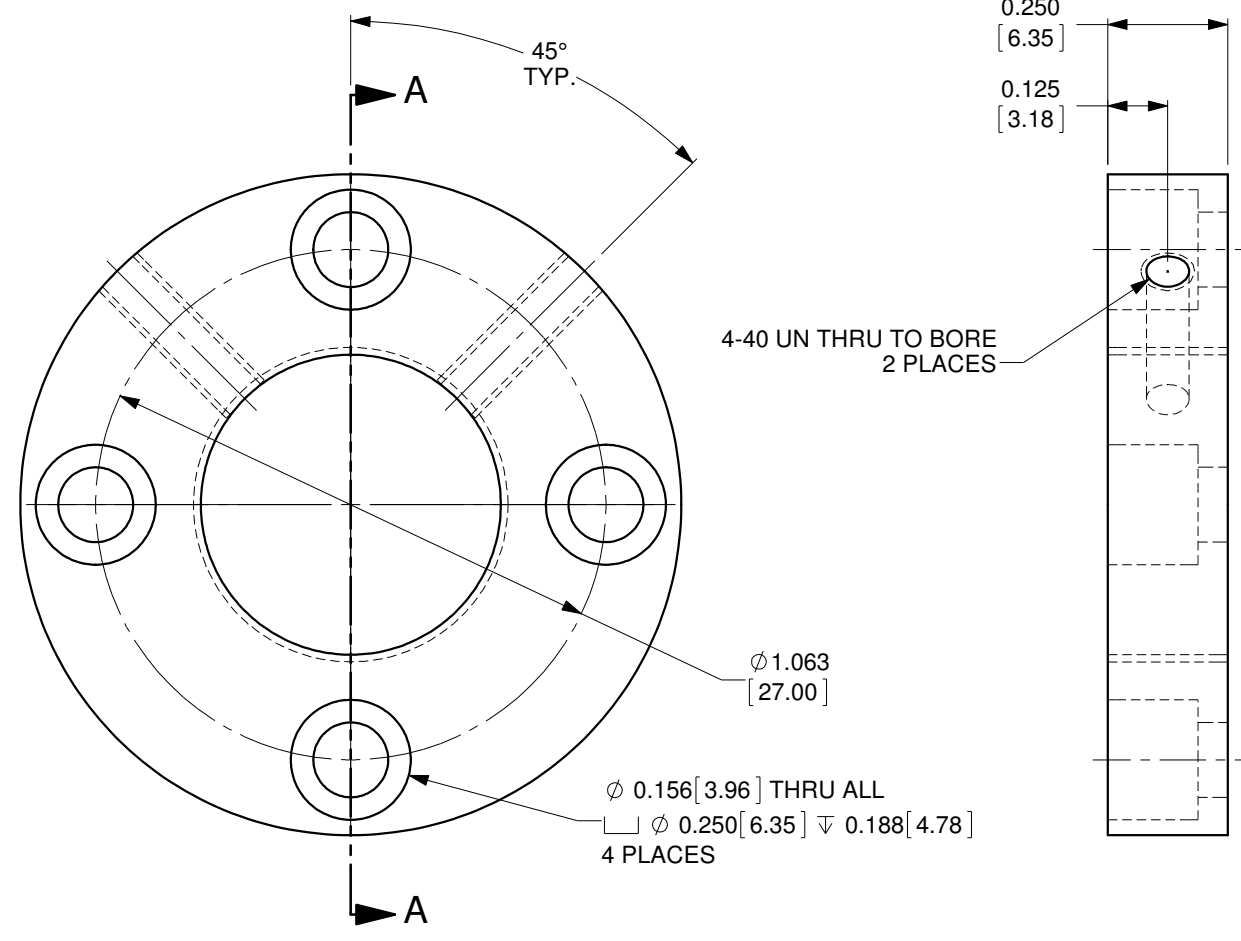

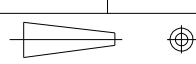


SECTION A-A



MATERIAL: 6061-T6 ALUMINUM, BLACK ANODIZED
OZ Optics reserves the right to change any specification without prior notice.

ALL DIMENSIONS ARE IN INCHES		A	N/A	ORIGINAL ISSUE	C.M.	17-OCT-2019
REV.	ECR REF#	REV.	ECR REF#	DESCRIPTION	ENG. BY	DATE
DRAWN BY: P. Summers		DATE: 10/17/2019		UNLESS NOTED OTHERWISE, DIMENSIONS ARE IN INCHES. MILLIMETERS ARE IN SQUARE BRACKETS, AND TOLERANCES APPLY AS SHOWN BELOW. INCHES BASIC DIMENSION .XX .XXX BELOW 4 ±.01 ±.005 OVER 4 ±.02 ±.01 MILLIMETERS BASIC DIMENSION .X .XX BELOW 101.6 ±.25 ±.10 OVER 101.6 ±.50 ±.20 ANGULAR DIMENSIONS BASIC DIMENSION X X.X ALL ANGLES ±2.5° ±0.5°	 219 WESTBROOK ROAD OTTAWA, ONTARIO CANADA K0A 1L0 PART BARCODE # 850	
CHECKED BY:		DATE:			DESC. LASER HEAD ADAPTER #17	
M/S CHECKED BY:		DATE:			DISK ADAPTER WITH 4 HOLES ON A 27mm BOLT CIRCLE	
APVD BY:		DATE:			PART NO. SIEMENS-01	
PROJECTION: 		CONFIDENTIAL THIS PRINT IS THE EXCLUSIVE PROPERTY OF OZ OPTICS AND MUST BE RETURNED UPON REQUEST. UNAUTHORIZED USE, MANUFACTURE OR REPRODUCTION IN WHOLE OR IN PART IS PROHIBITED.		SIZE: B		SCALE: 2.5:1
		SURFACE FINISH		DWG.# 4000-0335		SHEET 1 OF 1
		MILLED 125u		REV A		
		PROFILED 63u				