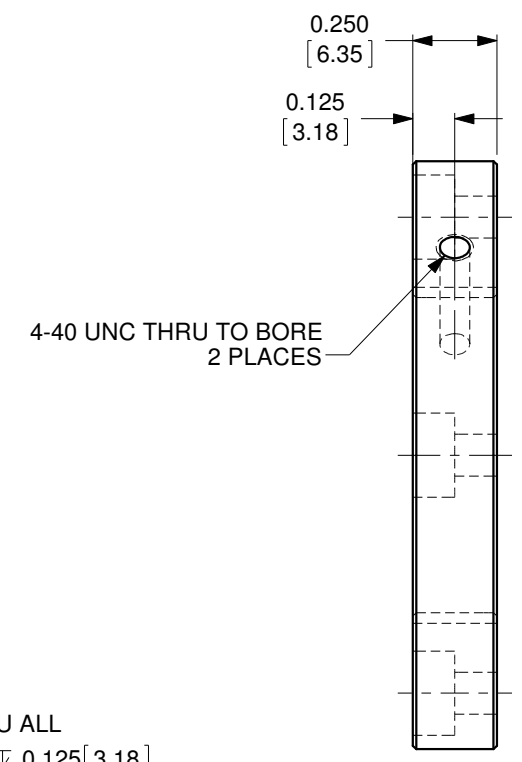
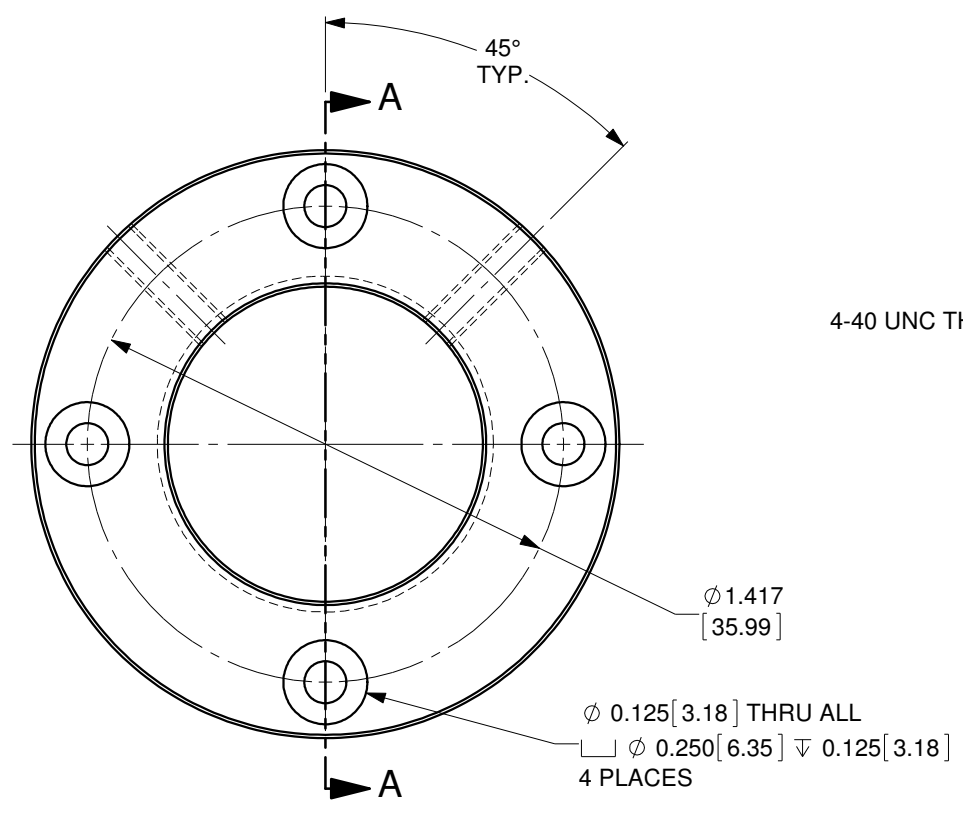


SECTION A-A



NOTE: THIS ADAPTER INCLUDES BC# 817 (NOT SHOWN)

MATERIAL: 6061-T6 ALUMINUM, BLACK ANODIZED
OZ Optics reserves the right to change any specification without prior notice.

A		N/A		ORIGINAL ISSUE		C.M.		06-DEC-2019	
REV.	ECR REF#	DESCRIPTION	ENG. BY	DATE					
DRAWN BY: P. Summers		DATE: 12/6/2019		UNLESS NOTED OTHERWISE, DIMENSIONS ARE IN INCHES. MILLIMETERS ARE IN SQUARE BRACKETS, AND TOLERANCES APPLY AS SHOWN BELOW.		219 WESTBROOK ROAD OTTAWA, ONTARIO CANADA K0A 1L0		PART BARCODE #	
CHECKED BY:		DATE:		INCHES		www.ozoptics.com		836	
M/S CHECKED BY:		DATE:		MILLIMETERS		DESC. LASER HEAD ADAPTER #15		DISK ADAPTER WITH 4 HOLES ON 1" SQUARE AND 1-32 FEMALE THREAD	
APVD BY:		DATE:		ANGULAR DIMENSIONS		PART NO. LPSC-30		REV A	
PROJECTION:		CONFIDENTIAL THIS PRINT IS THE EXCLUSIVE PROPERTY OF OZ OPTICS AND MUST BE RETURNED UPON REQUEST. UNAUTHORIZED USE, MANUFACTURE OR REPRODUCTION IN WHOLE OR IN PART IS PROHIBITED.		SURFACE FINISH		SIZE: B		DWG.# 4000-0333	
				MILLED 125u		PROFILED 63u		SHEET 1 OF 1	
								SCALE: 1.75:1	