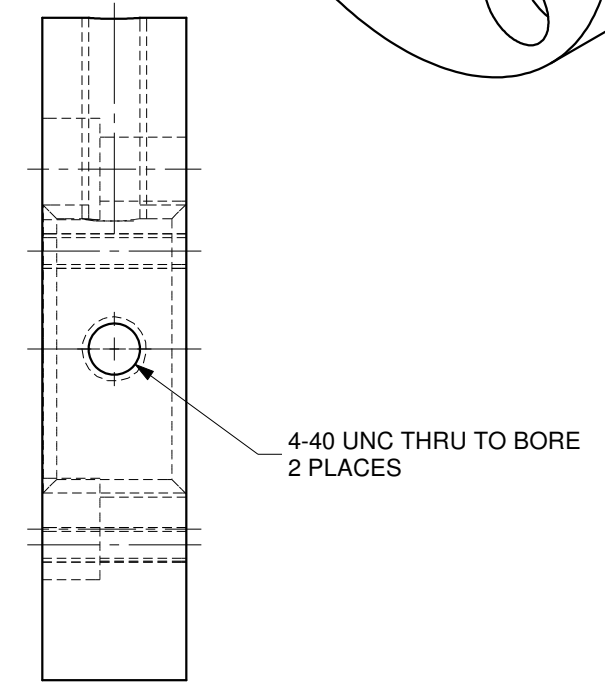
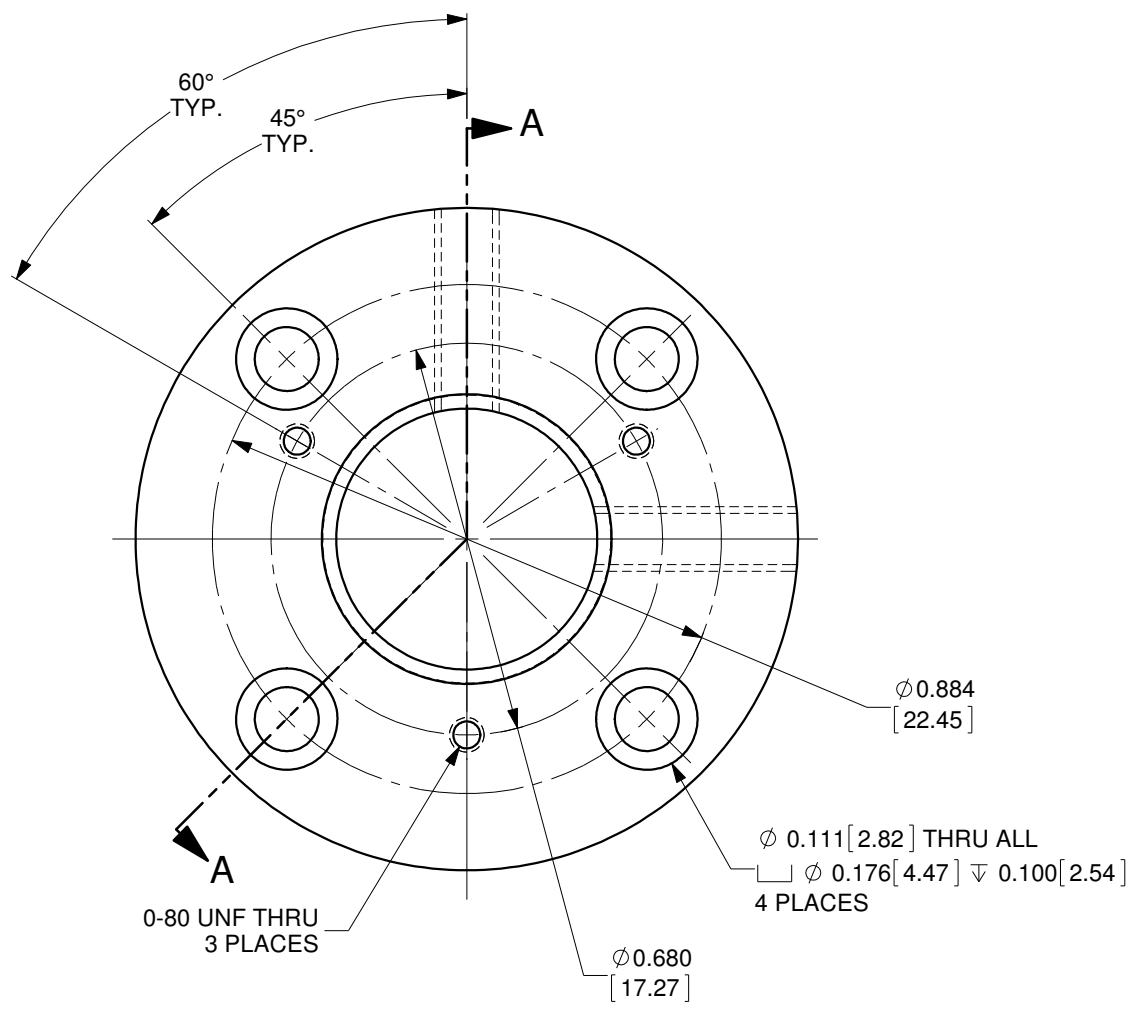



SECTION A-A



NOTE: THIS ADAPTER INCLUDES BC# 824 (NOT SHOWN)

MATERIAL: 6061-T6 ALUMINUM, BLACK ANODIZED
OZ Optics reserves the right to change any specification without prior notice.

A		N/A		ORIGINAL ISSUE		C.M.		06-DEC-2019		
REV.	ECR REF#	DESCRIPTION	ENG. BY	DATE						
DRAWN BY: P. Summers		DATE: 12/6/2019		UNLESS NOTED OTHERWISE, DIMENSIONS ARE IN INCHES, MILLIMETERS ARE IN SQUARE BRACKETS, AND TOLERANCES APPLY AS SHOWN BELOW.				219 WESTBROOK ROAD OTTAWA, ONTARIO CANADA K0A 1L0		PART BARCODE #: 800
CHECKED BY:		DATE:		INCHES		MILLIMETERS		DESC. LASER HEAD ADAPTER #14 1.15" OD DISK ADAPTER WITH 4 HOLES ON A 0.625" SQUARE		
M/S CHECKED BY:		DATE:		BASIC DIMENSION .XX .XXX		BASIC DIMENSION .X .XX		PART NO. LIGHT-01		
APVD BY:		DATE:		BELOW 4 ±.01 ±.005		BELOW 101.6 ±.25 ±.10		REV. A		
PROJECTION:		DATE:		OVER 4 ±.02 ±.01		OVER 101.6 ±.50 ±.20		SCALE: 3:1		
CONFIDENTIAL		DATE:		ANGULAR DIMENSIONS		ALL ANGLES ±2.5° ±0.5°		SIZE: B DWG.# 4000-0332 SHEET 1 OF 1		
THIS PRINT IS THE EXCLUSIVE PROPERTY OF OZ OPTICS AND MUST BE RETURNED UPON REQUEST. UNAUTHORIZED USE, MANUFACTURE OR REPRODUCTION IN WHOLE OR IN PART IS PROHIBITED.		DATE:		SURFACE FINISH		MILLED 125u		SCALE: 3:1		
		DATE:		PROFILED 63u						