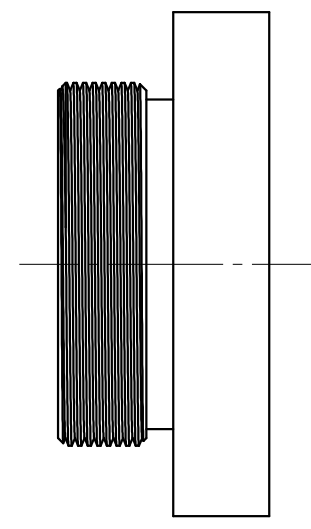
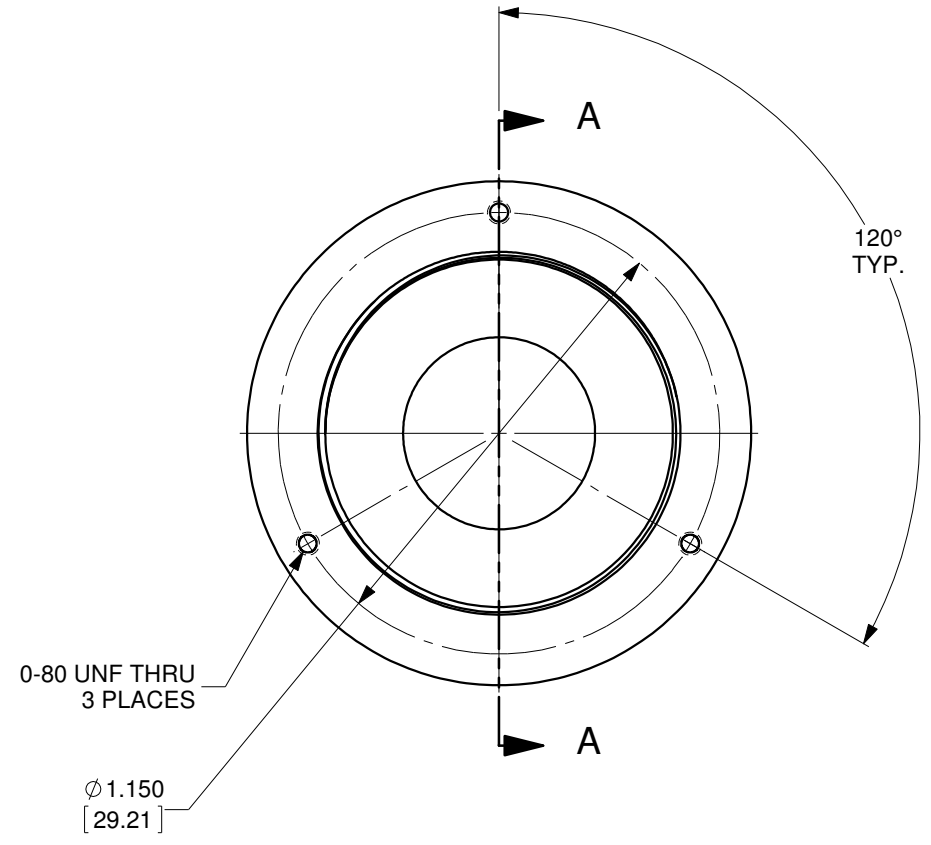




SECTION A-A



MATERIAL: 6061-T6 ALUMINUM, BLACK ANODIZED
OZ Optics reserves the right to change any specification without prior notice.

A		N/A		ORIGINAL ISSUE		C.M.		15-OCT-2019	
REV.	ECR REF#	DESCRIPTION	ENG. BY	DATE					
		UNLESS NOTED OTHERWISE, DIMENSIONS ARE IN INCHES. MILLIMETERS ARE IN SQUARE BRACKETS, AND TOLERANCES APPLY AS SHOWN BELOW.		 OZ Optics 219 WESTBROOK ROAD OTTAWA, ONTARIO CANADA K0A 1L0 www.ozoptics.com		PART BARCODE #		931	
DRAWN BY: P. Summers		DATE: 10/15/2019		DESC.		LASER HEAD ADAPTER #13		M24x1 MALE THREAD	
CHECKED BY:		DATE:		PART NO.		POLYTECK - 01		REV A	
M/S CHECKED BY:		DATE:		SURFACE FINISH		MILLED		125u	
APVD BY:		DATE:		PROFILED		63u		SIZE: B	
PROJECTION:				DWG.#		4000-0331		SHEET 1 OF 1	
CONFIDENTIAL THIS PRINT IS THE EXCLUSIVE PROPERTY OF OZ OPTICS AND MUST BE RETURNED UPON REQUEST. UNAUTHORIZED USE, MANUFACTURE OR REPRODUCTION IN WHOLE OR IN PART IS PROHIBITED.		ALL ANGLES: ±2.5° ±0.5°		SCALE:		2:1			