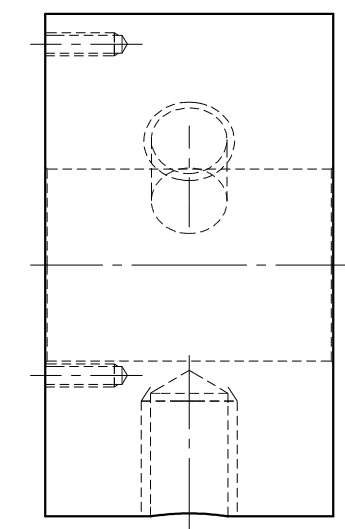
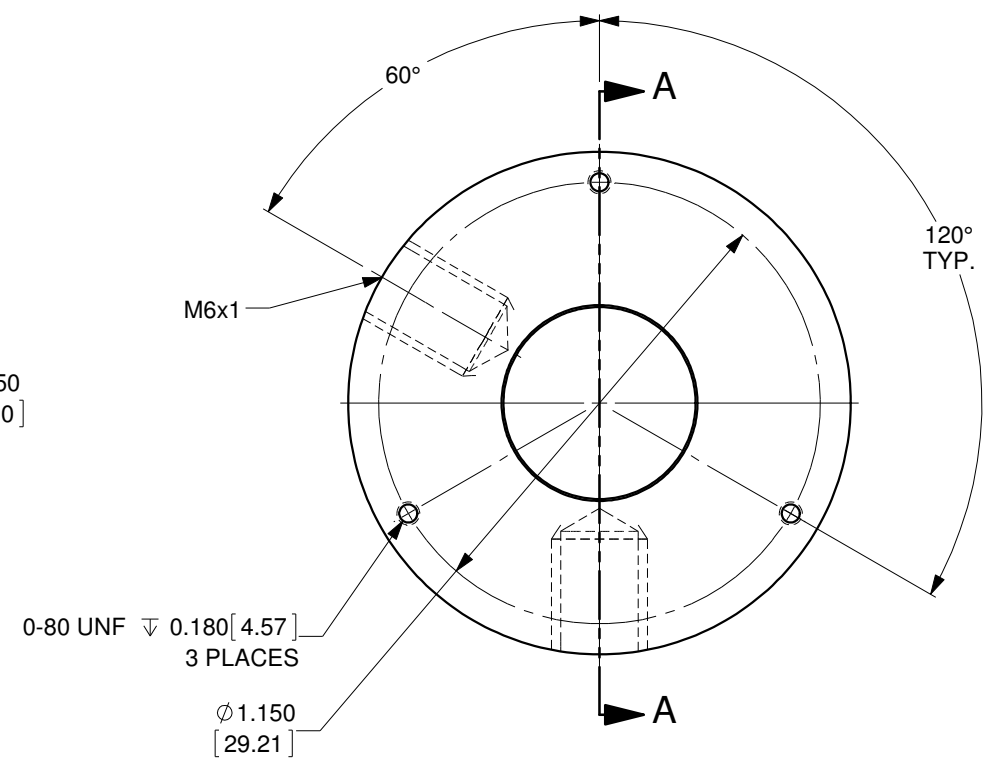


SECTION A-A



**MATERIAL: 6061-T6 ALUMINUM, BLACK ANODIZED**  
OZ Optics reserves the right to change any specification without prior notice.

A		N/A		ORIGINAL ISSUE		C.M.		16-OCT-2019	
REV.	ECR REF#	DESCRIPTION	ENG. BY	DATE					
ALL DIMENSIONS ARE IN INCHES		UNLESS NOTED OTHERWISE, DIMENSIONS ARE IN INCHES. MILLIMETERS ARE IN SQUARE BRACKETS, AND TOLERANCES APPLY AS SHOWN BELOW.		219 WESTBROOK ROAD OTTAWA, ONTARIO CANADA K0A 1L0		PART BARCODE #		835	
DRAWN BY: P. Summers		DATE: 10/16/2019		OZ Optics LIMITED		www.ozoptics.com		DESC. LASER HEAD ADAPTER #11	
CHECKED BY:		DATE:		MILLIMETERS		PART NO. LPSC-29		REV A	
M/S CHECKED BY:		DATE:		ANGULAR DIMENSIONS		POST MOUNT WITH AN M6 TAPPED HOLE AND A 1/4-20 TAPPED HOLE		SCALE: 2:1	
APVD BY:		DATE:		SURFACE FINISH		SIZE: B		DWG.# 4000-0329	
PROJECTION:		CONFIDENTIAL THIS PRINT IS THE EXCLUSIVE PROPERTY OF OZ OPTICS AND MUST BE RETURNED UPON REQUEST. UNAUTHORIZED USE, MANUFACTURE OR REPRODUCTION IN WHOLE OR IN PART IS PROHIBITED.		MILLED 125u		PROFILED 63u		SHEET 1 OF 1	