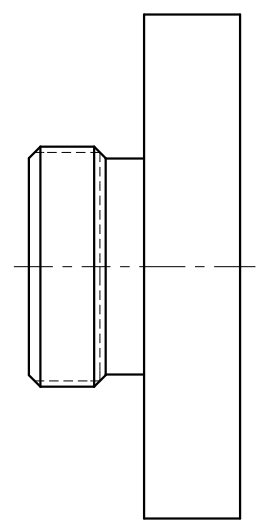
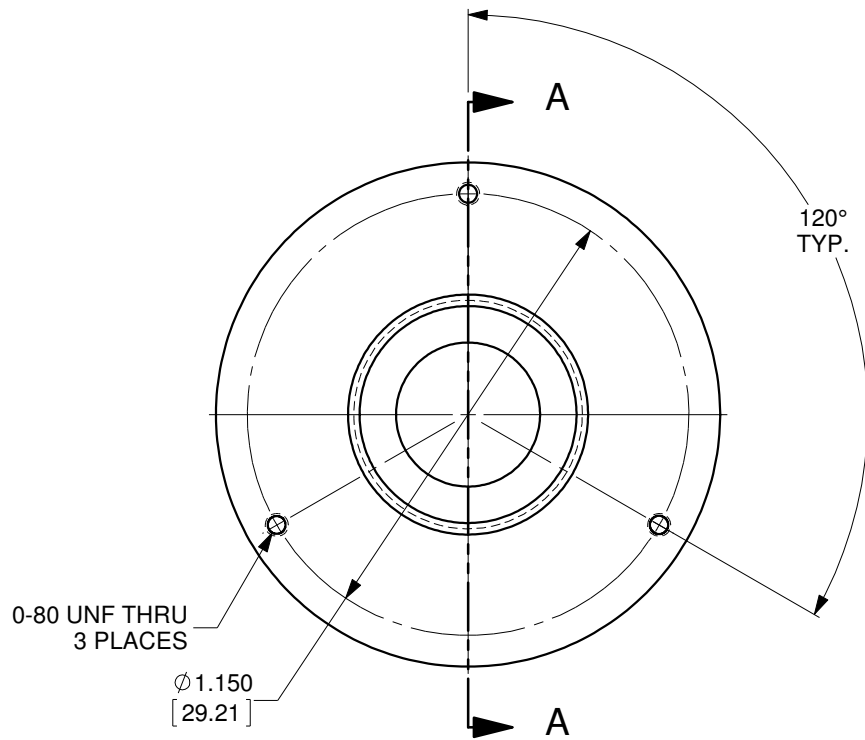


SECTION A-A



MATERIAL: 6061-T6 ALUMINUM, BLACK ANODIZED
OZ Optics reserves the right to change any specification without prior notice.

ALL DIMENSIONS ARE IN INCHES		A	N/A	ORIGINAL ISSUE	C.M.	04-OCT-2019
REV.	ECR REF#	DESCRIPTION	ENG. BY	DATE		
DRAWN BY: P. Summers		DATE: 10/4/2019		UNLESS NOTED OTHERWISE, DIMENSIONS ARE IN INCHES. MILLIMETERS ARE IN SQUARE BRACKETS, AND TOLERANCES APPLY AS SHOWN BELOW.		
CHECKED BY:		DATE:		INCHES		
M/S CHECKED BY:		DATE:		BASIC DIMENSION .XX .XXX		
APVD BY:		DATE:		BELOW 4 ±.01 ±.005		
PROJECTION:		[First Angle Projection Symbol]		OVER 4 ±.02 ±.01		
CONFIDENTIAL		THIS PRINT IS THE EXCLUSIVE PROPERTY OF OZ OPTICS AND MUST BE RETURNED UPON REQUEST. UNAUTHORIZED USE, MANUFACTURE OR REPRODUCTION IN WHOLE OR IN PART IS PROHIBITED.		MILLIMETERS		
				BASIC DIMENSION .X .XX		
				BELOW 101.6 ±.25 ±.10		
				OVER 101.6 ±.50 ±.20		
				ANGULAR DIMENSIONS		
				BASIC DIMENSION X X.X		
				ALL ANGLES ±2.5° ±0.5°		
				SURFACE FINISH		
				MILLED 125u		
				PROFILED 63u		
				DESC. LASER HEAD ADAPTER #6 5/8-24 TPI MALE THREADED ADAPTER		
				PART NO. LPSC-15		
				PART BARCODE # 919		
				REV. A		
				SIZE: B		
				DWG.# 4000-0324		
				SHEET 1 OF 1		
				SCALE: 2:1		

