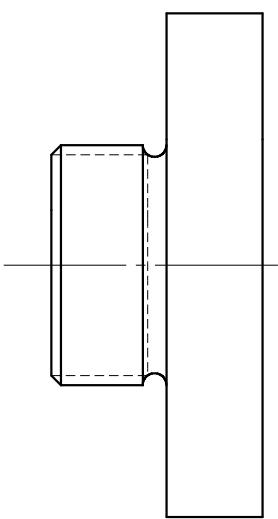
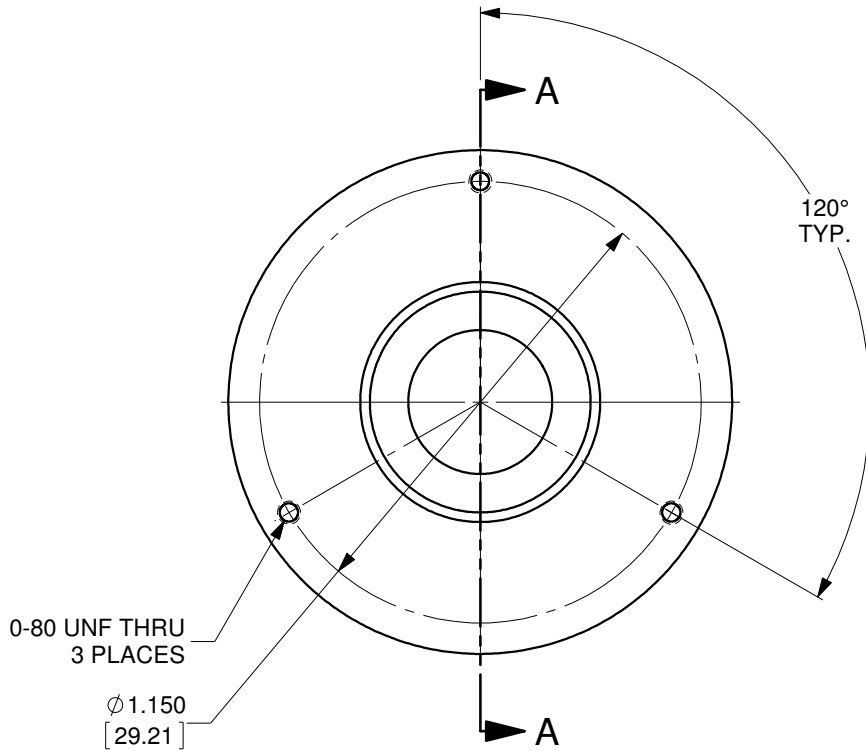


SECTION A-A



MATERIAL: 6061-T6 ALUMINUM, BLACK ANODIZED
OZ Optics reserves the right to change any specification without prior notice.

A		N/A		ORIGINAL ISSUE		C.M.		03-OCT-2019	
REV.	ECR REF#	DESCRIPTION	ENG. BY	DATE					
UNLESS NOTED OTHERWISE, DIMENSIONS ARE IN INCHES. MILLIMETERS ARE IN SQUARE BRACKETS, AND TOLERANCES APPLY AS SHOWN BELOW.		OZ Optics LIMITED		219 WESTBROOK ROAD OTTAWA, ONTARIO CANADA K0A 1L0		PART BARCODE #		826	
DRAWN BY: P. Summers		DATE: 10/3/2019		DESC.		LASER HEAD ADAPTER #4 5/8-32 MALE THREAD		PART NO.	
CHECKED BY:		DATE:		MILLIMETERS		LPSC-14		REV	
M/S CHECKED BY:		DATE:		ANGULAR DIMENSIONS		SCALE:		2:1	
APVD BY:		DATE:		SURFACE FINISH		SIZE: B		DWG.# 4000-0322	
PROJECTION:		CONFIDENTIAL THIS PRINT IS THE EXCLUSIVE PROPERTY OF OZ OPTICS AND MUST BE RETURNED UPON REQUEST. UNAUTHORIZED USE, MANUFACTURE OR REPRODUCTION IN WHOLE OR IN PART IS PROHIBITED.		MILLED 125u		PROFILED 63u		SHEET 1 OF 1	