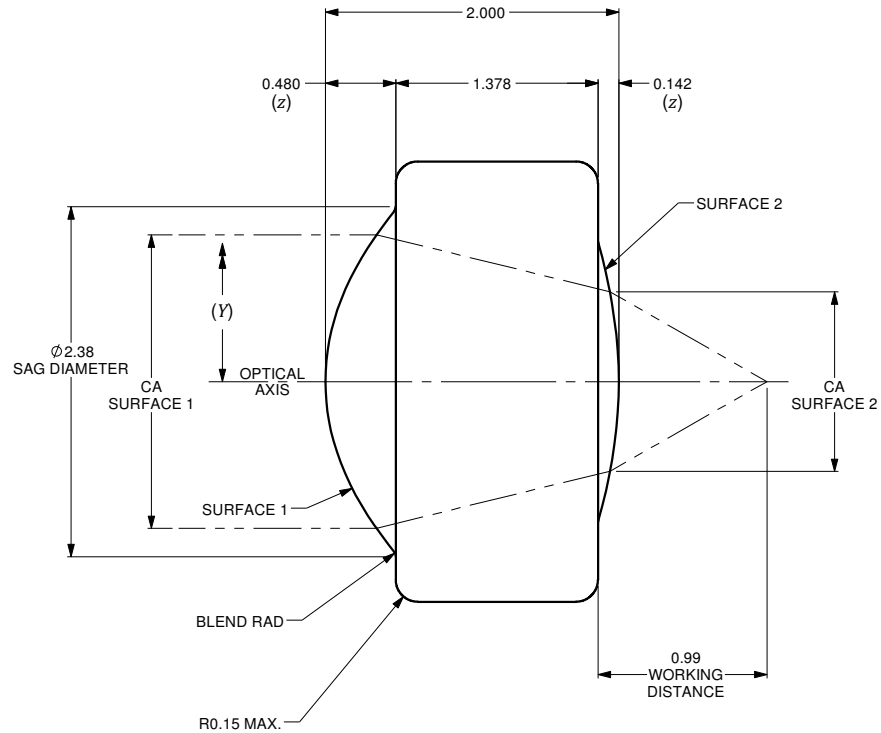
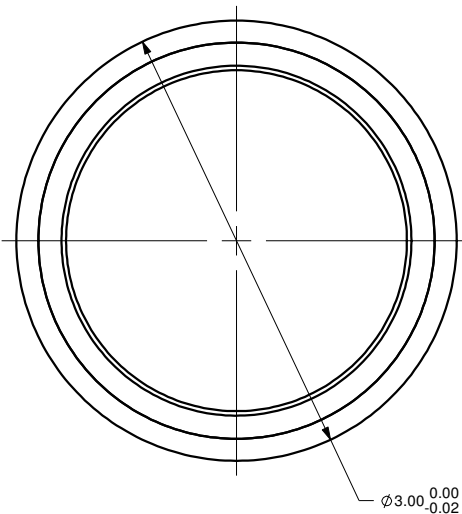


$$z = \frac{Y^2}{R \left(1 + \sqrt{1 - (1+k) \frac{Y^2}{R^2}} \right)} + A_4 Y^4 + A_6 Y^6 + \dots + A_n Y^n$$

	SURFACE 1	SURFACE 2
SURFACE TYPE	ASPHERIC	ASPHERIC
CLEAR APERTURE (CA)	ø2.0mm	ø1.2mm
RADIUS OF CURVATURE	1.47987	-2.69
k	-1.15074	-5.51326
A_4	1.96499E-002	7.06676E-002
A_6	-2.10454E-003	-1.22369E-001
A_8	4.17382E-004	7.23867E-002
A_{10}	-1.79580E-003	-1.39030E-002
A_{12}	0	0
A_{14}	0	0

VARIABLES	
z	SURFACE PROFILE
Y	DISTANCE FROM OPTICAL AXIS
R	RADIUS OF CURVATURE
k	CONIC CONSTANT
A_4	4th ORDER ASPHERIC COEFFICIENT
A_6	6th ORDER ASPHERIC COEFFICIENT
A_n	nth ORDER ASPHERIC COEFFICIENT



NUMERICAL APERTURE	0.50
EFFECTIVE FOCAL LENGTH	2.0mm

NOTES :

- MATERIAL: D-ZK3
- WAVEFRONT ABERRATION (RMS): <0.05λ @ 632.8nm
- AR COATING: 375-650 nm
REFLECTIVITY R_{avg} ≤0.50%

ALL DIMENSIONS ARE IN MILLIMETERS		A		N/A		ORIGINAL ISSUE		C.M.		10-SEP-2019	
DRAWN BY:	P. SUMMERS	DATE:	9/10/2019	REV.	ECR REF#	DESCRIPTION		ENG. BY	DATE		
CHECKED BY:		DATE:		UNLESS NOTED OTHERWISE, DIMENSIONS ARE IN MILLIMETERS, INCHES ARE IN SQUARE BRACKETS, AND TOLERANCES APPLY AS SHOWN BELOW.							
M/S CHECKED BY:		DATE:		INCHES							
AP/VD BY:		DATE:		BASIC DIMENSION							
PROJECTION:				DECIMAL PLACES							
				MILLIMETERS							
				ANGULAR DIMENSIONS							
				DECIMAL PLACES							
				PART NO.							
				SURFACE FINISH							
				MILLED							
				PROFILED							
				SIZE: B							
				DWG.# 4000-0207							
				SHEET 1 OF 1							
				SCALE: 30:1							

219 WESTBROOK ROAD
OTTAWA, ONTARIO
CANADA K6A 1L0

www.ozoptics.com

ASPHERIC LENS
f=2mm, OD=3mm. AR COATED FOR 375-650nm

AS-F2-D3-375/650

PART BARCODE #: 517

REV A