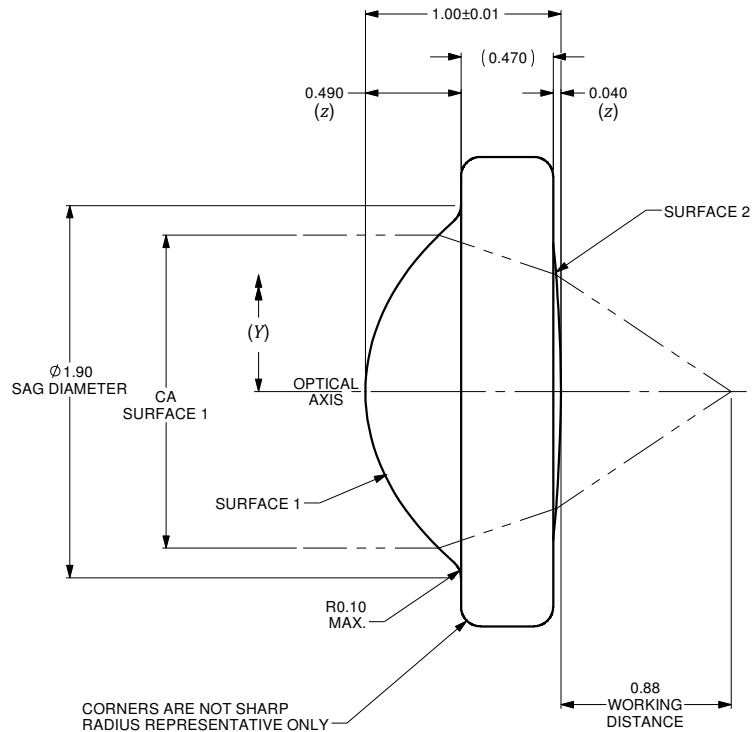
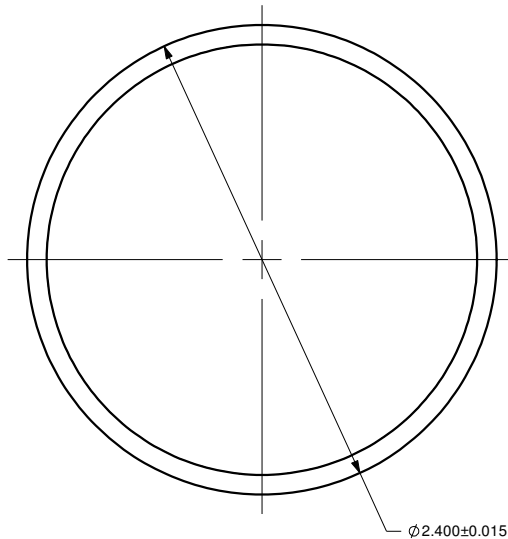


$$z = \frac{Y^2}{R \left(1 + \sqrt{1 - (1+k) \frac{Y^2}{R^2}} \right)} + A_4 Y^4 + A_6 Y^6 + \dots + A_n Y^n$$

| | SURFACE 1 | SURFACE 2 |
|------------------------|----------------|----------------|
| SURFACE TYPE | ASPHERIC | ASPHERIC |
| CLEAR APERTURE (CA) | ø1.60mm | ø1.20mm |
| RADIUS OF CURVATURE | 0.93244mm | -5.1384mm |
| <i>k</i> | -0.77603 | 0 |
| <i>A</i> ₄ | 3.45054E-002 | 13.19146E-002 |
| <i>A</i> ₆ | 3.57196E-002 | -18.08095E-002 |
| <i>A</i> ₈ | -8.25538E-002 | 12.62976E-002 |
| <i>A</i> ₁₀ | 13.19978E-002 | -20.44727E-002 |
| <i>A</i> ₁₂ | -10.38591E-002 | 14.74485E-002 |
| <i>A</i> ₁₄ | 0 | 0 |

| VARIABLES | |
|------------------------------|--|
| <i>z</i> | SURFACE PROFILE |
| <i>Y</i> | DISTANCE FROM OPTICAL AXIS |
| <i>R</i> | RADIUS OF CURVATURE |
| <i>k</i> | CONIC CONSTANT |
| <i>A</i> ₄ | 4th ORDER ASPHERIC COEFFICIENT |
| <i>A</i> ₆ | 6th ORDER ASPHERIC COEFFICIENT |
| <i>A</i> _{<i>n</i>} | <i>n</i> th ORDER ASPHERIC COEFFICIENT |



| | |
|------------------------|--------|
| NUMERICAL APERTURE | 0.56 |
| EFFECTIVE FOCAL LENGTH | 1.45mm |

NOTES :

- 1) MATERIAL: D-ZK3
- 2) WAVEFRONT ABERRATION (RMS): <0.08λ @ 632.8nm
- 3) AR COATING: 600-1050 nm
REFLECTIVITY R_{max} <1.00%

| ALL DIMENSIONS ARE IN MILLIMETERS | | A | N/A | ORIGINAL ISSUE | C.M. | 16-SEP-2019 | |
|---|--------------------|--|----------|----------------|---------|---|--|
| DRAWN BY: P. SUMMERS | DATE: 9/16/2019 | REV. | ECR REF# | DESCRIPTION | ENG. BY | DATE | |
| CHECKED BY: | DATE: | UNLESS NOTED OTHERWISE, DIMENSIONS ARE IN MILLIMETERS. INCHES ARE IN SQUARE BRACKETS, AND TOLERANCES APPLY AS SHOWN BELOW. | | | | PART BARCODE #: 504 | |
| M/S CHECKED BY: | DATE: | INCHES | | | | 219 WESTBROOK ROAD OTTAWA, ONTARIO CANADA K0A 1L0 | |
| AP/VD BY: | DATE: | MILLIMETERS | | | | www.ozoptics.com | |
| PROJECTION: | | DESC: | | | | ASPHERIC LENS | |
| | | PART NO.: | | | | f=1.45mm, OD=2.4mm. AR COATED FOR 600-1050nm | |
| CONFIDENTIAL THIS PRINT IS THE EXCLUSIVE PROPERTY OF OZ OPTICS AND MUST BE RETURNED UPON REQUEST. UNAUTHORIZED USE, MANUFACTURE OR REPRODUCTION IN WHOLE OR IN PART IS PROHIBITED. | | ANGULAR DIMENSIONS | | | | AS-F1.4-D2.4-600/1050 | |
| | | SURFACE FINISH | | | | SCALE: 40:1 | |
| | | SIZE: B | | | | DWG.# 4000-0205 | |
| | | SHEET 1 OF 1 | | | | REV A | |

4000-0205