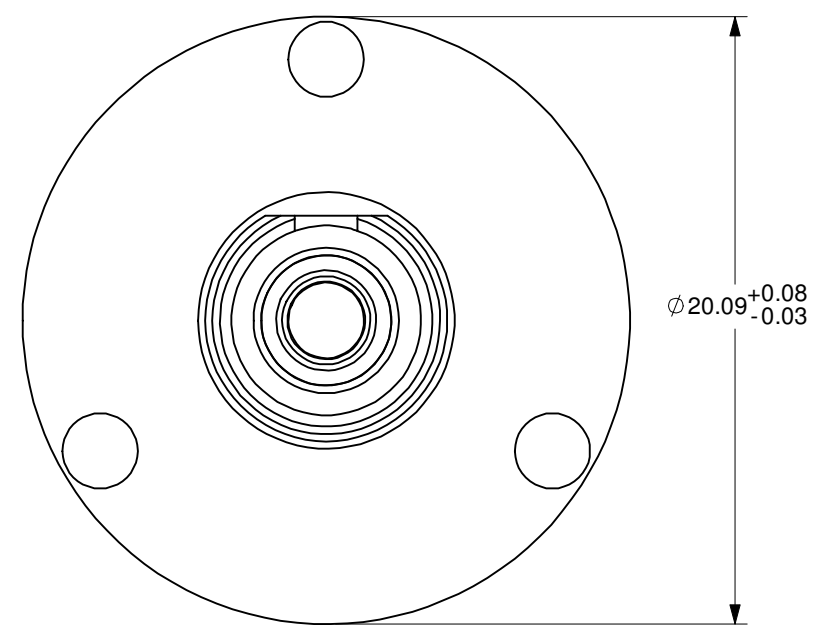
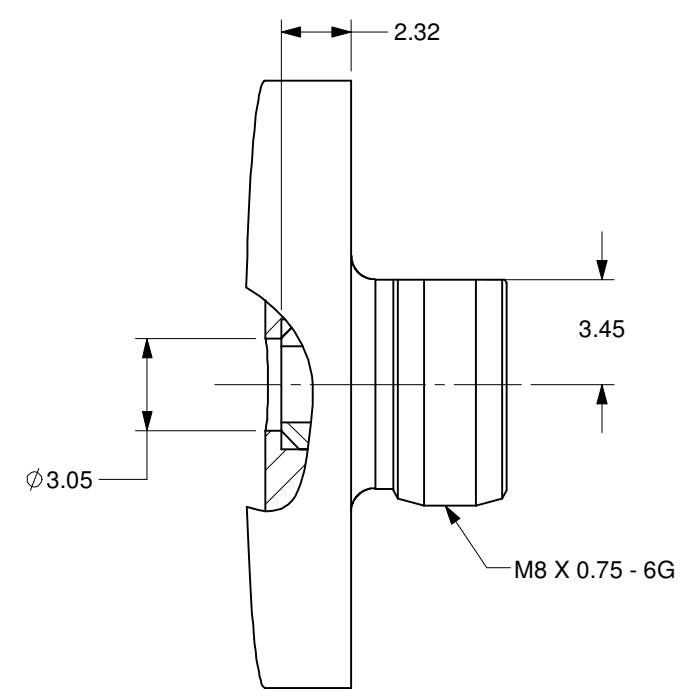
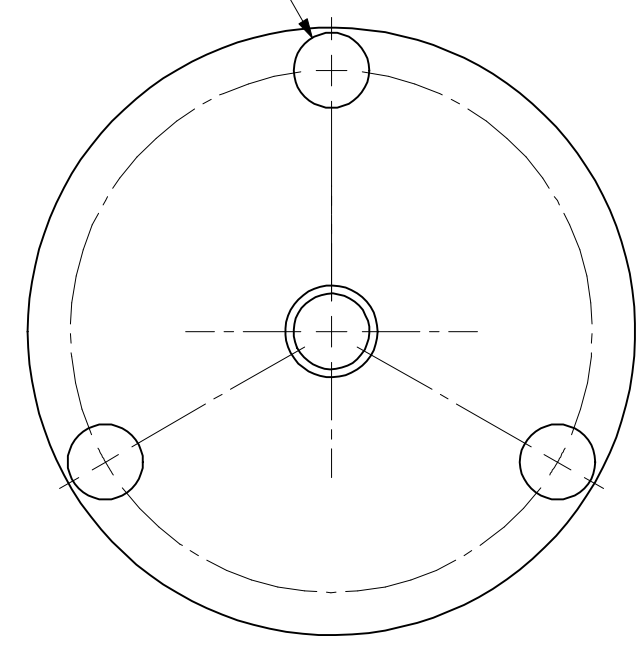


$\phi 2.49^{0.00}_{-0.13}$  THRU  
ON  $\phi 17.27 \pm 0.05$  B.C.  
@  $120^\circ$  - 3 PLCS.



ALL DIMENSIONS ARE IN MILLIMETERS

DRAWN BY: KOOSHA-SINA	DATE: 1/31/14	UNLESS NOTED OTHERWISE, DIMENSIONS ARE IN MILLIMETERS, INCHES ARE IN SQUARE BRACKETS, AND TOLERANCES APPLY AS SHOWN BELOW.			219 WESTBROOK ROAD OTTAWA, ONTARIO CANADA K0A 1L0	PART BARCODE #: <b>16956</b>																							
CHECKED BY:	DATE:		<table border="1"> <tr><th colspan="3">INCHES</th></tr> <tr><td>BASIC DIMENSION</td><td>.XX</td><td>.XXX</td></tr> <tr><td>BELOW 4</td><td>±.01</td><td>±.005</td></tr> <tr><td>OVER 4</td><td>±.02</td><td>±.01</td></tr> </table>	INCHES			BASIC DIMENSION	.XX	.XXX	BELOW 4	±.01	±.005	OVER 4	±.02	±.01	<table border="1"> <tr><th colspan="3">MILLIMETERS</th></tr> <tr><td>BASIC DIMENSION</td><td>.X</td><td>.XX</td></tr> <tr><td>BELOW 101.6</td><td>±.25</td><td>±.10</td></tr> <tr><td>OVER 101.6</td><td>±.50</td><td>±.20</td></tr> </table>	MILLIMETERS			BASIC DIMENSION	.X	.XX	BELOW 101.6	±.25	±.10	OVER 101.6	±.50	±.20	DESC: <b>20mm OD bulkhead stainless steel FC receptacle with a 2.06mm keyway for adjustable FC/APC connector</b>
INCHES																													
BASIC DIMENSION	.XX	.XXX																											
BELOW 4	±.01	±.005																											
OVER 4	±.02	±.01																											
MILLIMETERS																													
BASIC DIMENSION	.X	.XX																											
BELOW 101.6	±.25	±.10																											
OVER 101.6	±.50	±.20																											
M/S CHECKED BY:	DATE:	<table border="1"> <tr><th colspan="3">ANGULAR DIMENSIONS</th></tr> <tr><td>BASIC DIMENSION</td><td>X</td><td>X.X</td></tr> <tr><td>ALL ANGLES</td><td>±2.5°</td><td>±0.5°</td></tr> </table>	ANGULAR DIMENSIONS			BASIC DIMENSION	X	X.X	ALL ANGLES	±2.5°	±0.5°	PART NO.: <b>HPLC-A3A-PM</b>	REV: <b>N/A</b>																
ANGULAR DIMENSIONS																													
BASIC DIMENSION	X	X.X																											
ALL ANGLES	±2.5°	±0.5°																											
APVD BY:	DATE:	SURFACE FINISH: MILLED: 125u PROFILED: 63u	SIZE: <b>B</b>	DWG.#: <b>3000-0265</b>	SHEET 1 OF 1	SCALE: <b>4:1</b>																							
PROJECTION:		CONFIDENTIAL THIS PRINT IS THE EXCLUSIVE PROPERTY OF OZ OPTICS AND MUST BE RETURNED UPON REQUEST. UNAUTHORIZED USE, MANUFACTURE OR REPRODUCTION IN WHOLE OR IN PART IS PROHIBITED.																											